

## *Session 1:*

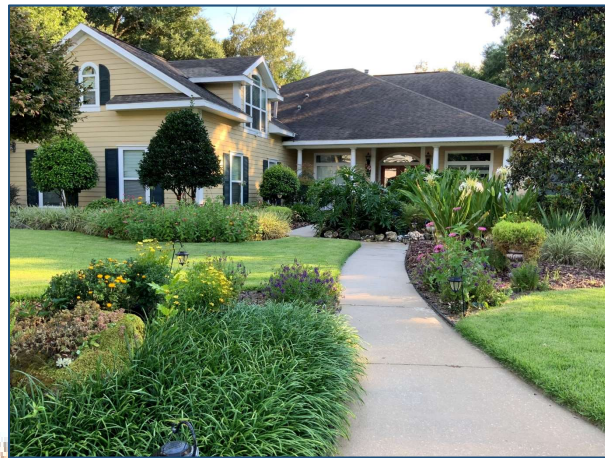
# Right Plant, Right Place

Lynn Barber, Florida-Friendly Landscaping™ Agent  
UF/IFAS Extension Hillsborough County



## Florida-Friendly Landscaping™

- **What is it?**
  - Integrated approach
  - Less time/\$
  - Wildlife friendly
- **Goals**
  - Conserve
  - Protect



## Right Plant, Right Place

- ***First and foremost*** of the 9 Florida-Friendly Landscaping™ principles
- Focus on water and environmental conservation
- Why?
  - Negative environmental impacts
  - FL current population 20 million residents
  - By 2060, 35 million residents projected
  - Water - not a renewable resource at the rate being used

## Florida Friendly Landscaping™ Nine Principles

1. ***Right plant, right place***
2. Water efficiently
3. Fertilize appropriately
4. Mulch
5. Attract wildlife
6. Manage yard pests
7. Recycle
8. Reduce stormwater runoff
9. Protect the waterfront

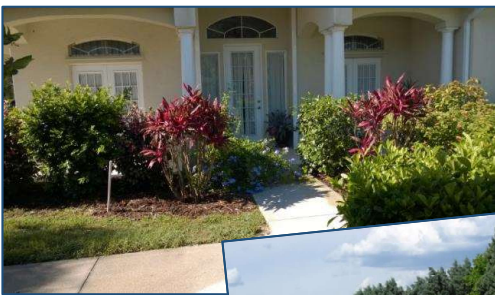


## Right Plant, Right Place

- Plants selected for a specific site will require minimal amounts of water, fertilizer, pesticides and maintenance.
- Thorough planning will help you place plants where their needs and yours are met.



## Are these good choices?



## *Right Plant, Right Place?*



## **Tips and Examples**

***Narrow strips of grass - difficult to maintain***



## Tips and Examples



## Tips and Examples

Before



After



## Tips and Examples

Before



After



## Planning Your Landscape

- **Keys to Success**
  - HOA, Codes, Restrictions ???
  - Site Analysis
  - Determine Needs
  - Design Concept and Considerations
    - Prepare the Site

## Key to Success

- **Proper Planning and Plant Selection**

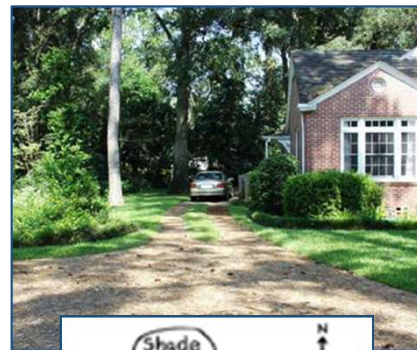
- Avoids problems later
- Saves energy, money, water, effort, etc.
- Makes the landscape more enjoyable
- Ensures needs are met



## Key to Success

- **Plan First, Plant Once**

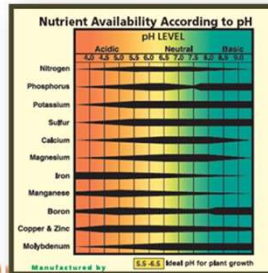
- This is a process, not a one-time event!
- Know the plants and the conditions required to thrive.
- Consult with your UF/IFAS County Extension Office.
- View [edis.ifas.ufl.edu](http://edis.ifas.ufl.edu) or *UF Whatever!*
- Utilize regional gardening books and magazines.



## Site Analysis

*What do you have and how can you use it?*

- Light
- Soil Type
  - Sand, Clay, Silt
  - Soil pH
  - Soil moisture
- Soil pH
  - Minimal cost



Soil Sampling and Testing for the Home Landscape or Vegetable Garden: <https://edis.ifas.ufl.edu/ss494>

## Site Analysis

*What do you have and how can you use it?*

- Views
- Hardscape
- Structural limitations and obstructions





## Site Analysis

- **Climate Conditions**

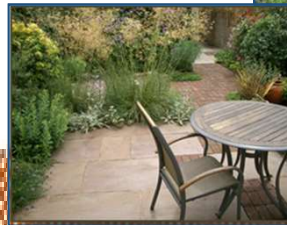
- Consider the orientation of your home.
- Locate microclimates in your landscape.
- Use the FFL Guide to Plant Selection & Landscape Design to guide plant choices.
- Choose plants recommended for your zone, which is ???



## Determine Needs and Wants

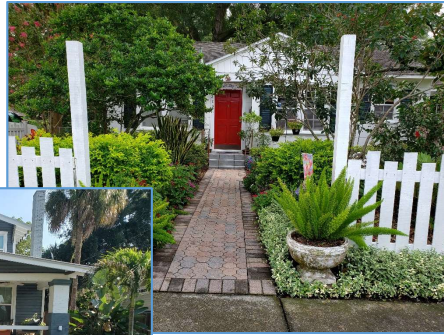
*How do you currently use the property?*

- Family activities
- Pets
- Storage
- Vegetable garden
- Outdoor entertainment



## Design Considerations

*Level of Maintenance*



## Design Considerations

*Level of Maintenance*



## Design Considerations

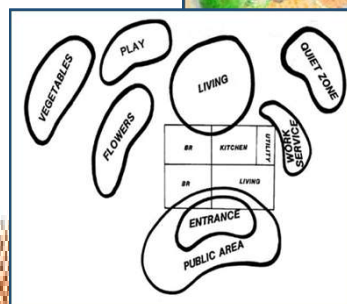
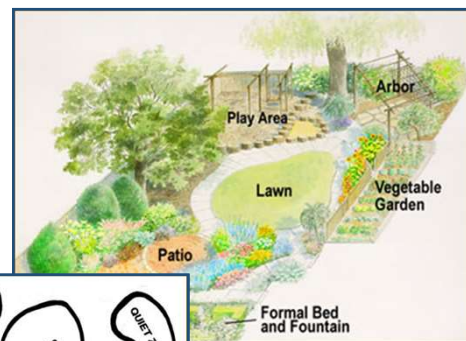
### *Eventual Size and Other Factors*

- Mature height and spread
- Growth rate
- Shape
- Salt tolerance
- Native or non-native adaptive
- Susceptibility to pests/disease



## Landscape Plan

- Arrange activity areas.
- Draw where you want trees, shrubs, ground covers, or flowering plants.
- Group plants according to needs.



## Site Preparation

- Remove unwanted plants and debris.
- Fix grade.
- Amend the soil.



## Buying Healthy Plants

- Look for new growth.
- Roots should be white and fibrous.
- Avoid pot-bound plants.
- Avoid diseased or insect-infested plants.



## Comparing Landscapes

### Landscape 1

Quarter Acre

Entire ¼ acre covered in lawn (10,890 sq. ft.)

### Landscape 2

Quarter Acre

1/16 covered in lawn (2723 sq. ft.)

Rest of the area is lower-maintenance plants

*Landscape 1 has four times the energy costs as Landscape 2! (Parker 1982)*

**Lawn 1** averages **23,195 gallons** of water/month; **Lawn 2** averages **5,799 gallons/month** (Haley 2014, ABE 355)

City of Tampa/Hillsborough County residents would pay an average of **\$122/month for Lawn 1**,  
**compared to \$21/month for Lawn 2.**



## Environmentally Friendly Landscaping



**Your** yard is an integral part of the protection and preservation of Florida's environment.

## Conclusions

- The decisions we make about our landscapes have a profound impact on water quality.
- With a little thought, our landscapes can combine beauty, function, and environmental protection.



## Show off your landscape!

### Community Water Wise Award Program

Sponsored by Tampa Bay Water & Florida-Friendly Landscaping™ Yard Recognition

